

SMS

since 1946



decontamination under control

About SMS

OVER 75 YEARS OF EXPERIENCE

SMS was established in 1946 and has been a reputable Polish manufacturer of sterilizers ever since. In 2019 we opened a brand-new state of the art manufacturing facility, just outside of Warsaw.

Our portfolio of sterilization and disinfection control solutions is trusted by hospitals, scientific institutes, laboratories and the pharmaceutical industry. At SMS we are driven by a passion for Quality. Both for our products and our services. Our attention to detail, from Research and Development through to manufacturing, and up to installation has been recognized by many customers, making SMS a leading producer not only in Poland but also worldwide.

Besides our Infection Control devices we offer complete turnkey solutions, consultation and feasibility studies for our partners.



Quality Management

SMS introduced a Quality Management system based on ISO 13485:2016 and ISO 9001:2015. Our devices comply with European standards and directives (CE).

We are continuously monitoring and seeking opportunities to optimize our processes, products and performance. Our employees are educated to follow process and product specifications, recognize risks and possible improvements.

Sustainability

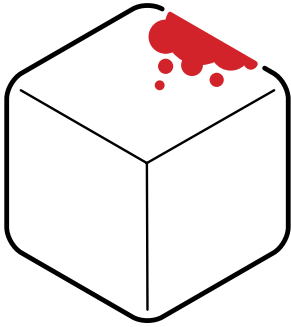
Sustainability at SMS focuses on the areas where opportunities for our business intersect with social and environmental impact.

We aim to achieve sustainable growth, deliver life changing technology and recreate value in communities in the world.



Fully integrated CSSD solutions

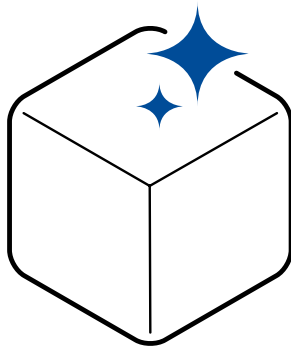
Our equipment and services enable our customers to confidently and efficiently deliver reprocessed medical instruments to the operating rooms. We can assist you in developing an efficient and cost effective workflow as well as secure patient safety.



SOILED ZONE

From the OR to cleaning and disinfection

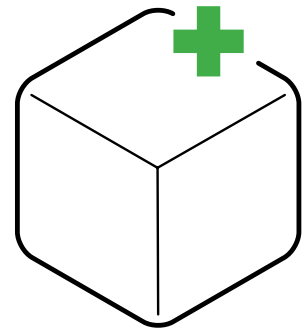
Unclean instruments arrive in the decontamination zone to be disassembled, sorted, manually pre-cleaned, washed in ultrasonic washers before being loaded into the washer disinfectant.



CLEAN ZONE

From cleaning and disinfection to sterilization

In this zone, clean and disinfected instruments are inspected, set aside for maintenance or repair, reassembled and wrapped for sterilization in a steam or low-temperature sterilizer.



STERILE ZONE

From sterilization to storage

After sterilization the sterile packed instruments and instrument sets are ready for storage. SMS offers racked sets and various distribution trolleys for internal transport.

HOW WE CAN SUPPORT YOU?

SMS provides professional support and advice throughout the planning process. From the earliest conceptual stages, through design and construction. We'll help you gain an understanding of capacity need, discover the optimized logistic flow of instruments, equipment and staff. Our designers from the architectural planning department are available to help you with your project.



AS 66

The AS 66 steam sterilizer series is designed to be compatible with sterilization units (STU). As it is a widely used standard the AS 66 sterilizers are a perfect solution for CSSDs that want to comply with industry standards. Additionally it makes the AS 66 series an ideal choice for health care institutions looking to expand their CSSD that already use this standard.

The 7" LCD color touch panel with an intuitive and easy-to-use control system lets the users to adjust all cycle parameters. A wide variety of screens can display the current sterilizer parameters allowing staff to monitor the ongoing cycle and sterilizer status.

We offer the AS 66 series in a wide range of capacities, from 4 to 12 STU. If a second supplementary sterilizer with smaller capacity is needed, you can choose a steam sterilizer from the AS 44 or AS 366 series.

Design

- automatic vertical sliding door
- integrated steam generator
- cooling water saving system
- the chamber, heating jacket and doors are made of AISI 316L stainless steel
- the housing is made of AISI 304 stainless steel
- piping made of non-corrosive materials

Accessories

- loading cart for baskets
- loading cart with two full metal shelves
- loading cart with two mesh shelves
- transport trolley
- sterilization basket – 580 x 280 x 260 mm
- sterilization basket – 580 x 280 x 130 mm
- water purification system
- compressor

Control panel

- Control system with a color LCD touch screen panel 7"
- 19 sterilization and 2 test programs (vacuum test, Bowie & Dick test)
- access control system with password protection

Archiving

- built-in dot matrix printer
- electronic cycle data recorder (option)

Options for non-medical applications

- an additional temperature sensor located inside the chamber (PT 100 sensor)
- HEPA exhaust filter
- quick cooling system
- counter-pressure support system
- biological cross-contamination barrier
- stainless steel piping

	AS 666	AS 669	AS 6612	AS6615	AS 6618
Version					
- double door	•	•	•	•	•
- single door	•	•	•		
Chamber volume					
- sterilization units (STU)	4	6	8	10	12
- liters	334*	459*	605*	756	897
Overall dimensions					
- width (mm)			1170		
- depth (mm)	970*	1225*	1525*	1835	2125
- height (mm)			1900		
Electric power (kW)		38,5		56,5	

* Single door sterilizers have a 40 liter bigger capacity and are 90mm deeper



AS 366

The AS 366 is a 2 STU steam sterilizer and is the smallest sterilizer compatible with sterilization units offered by SMS.

It is a great accompanying sterilizer for the AS 66 series, especially for CSSDs that require two sterilizers, but the second one does not need to have such a large capacity as the AS 66 series.

AS 366 utilizes the best solutions used in all SMS sterilizers, so it works perfectly as a primary device where small quantities of loads are sterilized daily.

Design

- automatic vertical sliding door
- integrated steam generator
- cooling water saving system
- the chamber, heating jacket and doors are made of AISI 316L stainless steel
- the housing is made of AISI 304 stainless steel
- stainless steel piping

Accessories

- loading cart for baskets
- loading cart with two full metal shelves
- loading cart with two mesh shelves
- transport trolley
- sterilization basket – 580 x 280 x 260 mm
- sterilization basket – 580 x 280 x 130 mm
- water purification system
- compressor

Control panel

- Control system with a color LCD touch screen panel 5,7"
- 18 sterilization and 2 test programs (vacuum test, Bowie & Dick test)
- access control system with password protection

Archiving

- built-in dot matrix printer

Options for non-medical applications

- an additional temperature sensor located inside the chamber (PT 100 sensor)
- HEPA exhaust filter

	AS 366
Version	
- double door	•
- single door	
Chamber volume	
- sterilization units (STU)	2
- liters	150
Overall dimensions	
- width (mm)	800
- depth (mm)	975
- height (mm)	1900
Electric power (kW)	20





AS 44

The AS 44 steam sterilizer series consists of two models with small dimensions, which makes them an ideal solution for small sterilization rooms or as supplementary devices, e.g. for an operating theater.

To answer the needs of sterilization rooms with small daily load quantities and often limited space, SMS created the AS 44 series. The series consists of two sterilizers with small footprints and capacities of 100 and 150 liters. This, combined with modern and proven solutions, known from the AS 66 series, and an easy to use 7" touch screen makes the AS 44 sterilizers a popular choice for smaller medical facilities.

Design

- automatic vertical sliding door
- integrated steam generator
- cooling water saving system
- the chamber, heating jacket and doors are made of AISI 316L stainless steel
- the housing is made of AISI 304 stainless steel
- piping made of non-corrosive materials

Accessories

- loading cart for baskets
- loading cart with two full metal shelves
- loading cart with two mesh shelves
- transport trolley
- AS 446 sterilization basket
585 x 365 x 170 mm
- AS 449 sterilization basket
436 x 365 x 170 mm
- water purification system
- compressor

Control panel

- Control system with a color LCD touch screen panel 7"
- 19 sterilization and 2 test programs (vacuum test, Bowie & Dick test)
- access control system with password protection

Archiving

- built-in dot matrix printer
- electronic cycle data recorder (option)

Options for non-medical applications

- an additional temperature sensor located inside the chamber (PT 100 sensor)
- HEPA exhaust filter
- quick cooling system
- counter-pressure support system
- biological cross-contamination barrier
- stainless steel piping

	AS 446	AS 449
Version		
- double door	•	•
- single door	•	•
Chamber volume		
- liters	103*	150*
Overall dimensions		
- width (mm)	800	
- depth (mm)	900	1200
- height (mm)	1615	
Electric power (kw)	20	

* Single door sterilizers have a 6 liter bigger capacity





SMS 100

Our new medical 1 STU steam sterilizer, SMS 100, is a response to the market demand for a compact and economical unit suited for small operation theaters, isolation wards, outpatient clinics, laboratories etc.

Thanks to user feedback and our expertise, we have created a small but versatile unit that is very user friendly. The basic medical unit can be tailored to suit specialized needs (e.g. laboratories, clinics, dental offices) by adding necessary features.

We recommend a dedicated mobile stainless steel cabinet for the SMS 100, which can hold a compressor and a water treatment station (offered as an option).

Design

- manually opened and closed door
- integrated steam generator
- the chamber, heating jacket and doors are made of AISI 316L stainless steel
- the housing is made of AISI 304 stainless steel
- piping made of non-corrosive materials

Accessories

- sterilization basket 585 x 365 x 170 mm
- water purification system
- compressor

Control panel

- Control system with a color LCD touch screen panel 7"
- 15 sterilization and 2 test programs (vacuum test, Bowie & Dick test)
- access control system with password protection

Archiving

- built-in thermal printer

	SMS 100
Version	
- double door	
- single door	•
Chamber volume	
- sterilization units (STU)	1
- liters	102
Overall dimensions	
- width (mm)	845
- depth (mm)	935
- height (mm)	730
Electric power (kW)	7





P150

The P150 low-temperature plasma sterilizer is designed for sterilizing medical instruments and equipment made of heat-sensitive materials.

In the chamber in a low vacuum cold plasma is generated. It diffuses through the chamber and reaches all surfaces of the load. During the sterilization process hydrogen peroxide (H_2O_2) breaks down into oxygen and water, which are environmentally friendly and do not require disposal.

Characteristics

- sterilized equipment is ready for use instantly after the sterilization process
- no drainage or ventilation required
- rectangular chamber with guides, on two levels, for sterilization baskets

Archiving

- printer with simple paper loading (bluetooth or Wi-Fi printers are an option)
- provides a print-out of the entire sterilization process, including alerts

Accessories

- basket – 680 x 395 x 150 mm

Control panel

- microprocessor controller assures a fully automatic and safe completion of the selected sterilization program
- 9,7" color touchscreen with a user friendly control panel on the loading side and a 4,3" color touchscreen on the unloading side
- an interactive sterilizer diagram showing the information about the ongoing sterilization process and individual components
- process chart (temperature and pressure)
- remote control and monitoring

	P150
Versions	
- single door	•
- double door	•
Chamber volume	
- usable (l)	103
External dimensions	
- width (mm)	860
- depth (mm)	1060*
- height (mm)	1745
Electric power (kw)	4

* Single door sterilizers are 55 mm shallower





UM 642

The UM 642 ultrasonic cleaner is designed as a versatile device for tool pre-cleaning that has a small footprint. It can be used for both manual and ultrasonic cleaning. This makes UM 642 an excellent addition to tool pre-treatment systems in all CSSDs.

The UM 642 cleaner has a sink mixer with a pull-out spout. To further increase the ease of use and expand the washing capabilities of the manual side, it is equipped with a water spray gun with a set of 6 replaceable nozzles. If the UM 642 is connected to a compressed air system, the gun can also be used for air drying.

A very intuitive and easy to use control panel, in the ultrasonic side, allows users to program the washing temperature, washing time and select the ultrasonic mode. It also displays the current temperature of the washing bath and the time remaining until its completion.

	UM 642
Manual washing chamber dimensions	
- width (mm)	600
- height (mm)	400
- depth (mm)	250
Ultrasonic chamber dimensions	
- width (mm)	600
- height (mm)	400
- depth (mm)	200/220
External dimensions	
- width (mm)	1500
- height (mm)	870
- depth (mm)	700
Ultrasonic unit	
- generator operating frequency (kHz)	40
- temperature range (°C)	20 – 80
- cycle time adjustment (min)	0 – 99
- ultrasonic power (kW)	1,1
- heater power (kW)	1,6



Option

As an option we offer a faucet with a pull down sprayer that simplifies the washing process. The elastic hose lets you easily clean larger objects and all the parts that are hard or even impossible to reach with conventional faucets.



MD10

MD washers



Vertical
sliding
doors

Finding the necessary space for all of the devices in the CSSD is often a big problem. In response to such difficulties, we have introduced the MD series of washer-disinfectors, which offer the highest quality of cleaning and disinfection whilst having a small footprint. Vertically sliding doors are an additional solution that saves valuable space.

The intuitive and easy-to-use software allows users to set all of the washer parameters. A wide range of user programs, which may consist of up to 10 phases and a drying phase, allows the device to be perfectly adjusted to your needs. The MD washers allow you to select programs based on the A_0 value, which expresses the efficacy of the disinfection process, and to monitor it in real time.



MD15
with automatic loading and unloading systems

	MD 10	MD 15
Chamber dimensions		
- DIN 1/1 trays	10 do 12	15 do 18
- volume (l)	280	417
- width (mm)	550	626
- depth (mm)	620	812
- height (mm)	685	685
External dimensions		
- width (mm)	780	900
- depth (mm)	800	1000
- height (mm)	1950	1942

Processing different types of instruments in one device is very challenging. To overcome this matter the MD10 and MD15 series have a wide range of specially designed washing equipment. This allows you to clean various kinds of items, from the simplest ones, placed on trays, to specialized instruments. Our solutions ensure an optimal usage of washing space and reducing the reprocessing costs.



Washing racks



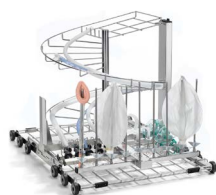
Mini-invasive surgery washing



Transport trolleys



Baskets



Anesthesia washing



Washing Da Vinci equipment (MD15)



Container washing



ASL

The ASL steam sterilizer family is a modern, innovative and very efficient range of sterilizers designed for laboratories and research facilities. An intuitive and easy-to-use control panel, reliability and a wide range of versions make it a popular choice.

ASL sterilizers have been designed to ensure personnel, sterilizer and load safety. SMS delivers products that meet the highest industry safety standards and directives. This guarantees safety not only for your employees operating the autoclaves but also for your laboratory and the loads being sterilized.

Our laboratory autoclaves, manufactured in Poland (European Union), have been designed to provide high quality, repeatable performance for a wide range of applications used in modern laboratories, which include: liquid sterilization, agar preparation, pipette and glass sterilization, biohazard and waste sterilization, instrument sterilization and more.

ASL sterilizers versions

	B	M	V	MS	MV	MSV
Fast cooling system		•		•	•	•
Vacuum pump			•		•	•
Counter-pressure support system				•		•

Additionally, each version can be equipped with a 0,2 µm HEPA exhaust filter (version+FA).

example

ASL 80 MS+FA – 80 liter ASL sterilizer with counter-pressure support, fast cooling system and HEPA exhaust filter

Specification

- Cylindrical, hand polished stainless steel (AISI 316L) sterilization chamber
- An additional temperature sensor located inside the chamber (PT 100 sensor)
- THERMOLOCK – reliable automatic door closing system with temperature safeguard
- Auto-start function
- Fractionated vacuum deaeration (V, MV, MSV versions)
- Automatic steam generator cleaning system
- Condensate cooling system ensuring safe dumping temperature
- Validation port
- Optional printer
- 20 sterilization programs
- V, MV and MSV models have 2 additional test programs (vacuum test, Bowie & Dick test)

	ASL 60	ASL 80	ASL 100
Maximal recommend capacity			
- instruments (kg)	20	30	40
- textiles (kg)	10	17	25
- fluids (l)	15	21	30
Chamber dimensions			
- diameter (mm)		413	
- depth (mm)	460	610	760
- usable capacity (l)	60	80	100
Overall dimensions			
- width (mm)		735	
- depth (mm)		600	
- height (mm)	797	947	1097
Electric power (kw)		7	10



F108



PROTEC

The most advanced and reliable heat sealers on the medical and pharmaceutical market. They are made from the best materials available to ensure that every sealed instrument is properly protected and stay sterile until needed.

According to ISO 11607-2, the sealing process must be validated. To meet this requirement, Famos introduced a unique system that continuously monitors three sealing parameters: temperature, speed and sealing force. If any of these parameters is outside the set limits the device will display an error message and stop the sealing process.

To help with managing the storage of sterilized instruments, the F110 and F220 models are equipped with printers. This lets users label the sealed packages with the necessary information, including the expiry dates and barcodes.

F110

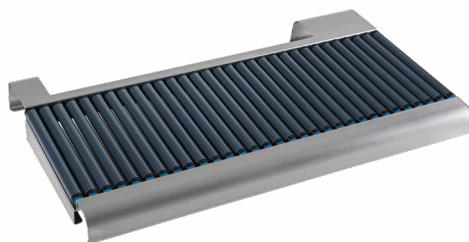


F220



	F108	F110	F220
Number of lines in display	2		6
Seal		15	
- rib seal width (mm)		15	
- flat seal width (mm)	12		15
- sealing speed (m / min)	8		10
- temperature adjustment	•	•	•
Printing			
- built-in printer		•	•
- packing and expiry date		•	•
- programmable description		•	•
Overall dimensions			
- width (mm)	438		527
- depth (mm)	137		162
- height (mm)	289		314

Accessories



- Roller front table



- Extension for roll holder
- Roll holder with cutting device



Stainless steel furniture

SMS designs ergonomic furniture to make your work more comfortable and effective. It is made from stainless steel so that it is durable, easy to clean and disinfect.

Our wide range of stainless steel furniture lets you choose an assortment that meets your needs. In addition we offer our products in a variety of sizes which enables you to find the right fit for any room layout you have. We will gladly help you with selecting the necessary furniture and arranging it to improve workflow efficiency, so that you can concentrate on your work.



Tables

Tables are the primary work surface, which is why we offer a wide selection of tables for various applications.

Standard **tables** are available in two heights to accommodate work done in a sitting or standing position. We are aware that furniture is placed into existing rooms, which are usually already partly furnished. To make it easier for our clients to arrange their space, we offer tables in three widths and lengths ranging from 60 to 200 cm.

You can also find sink tables, packaging stations and illuminated tables in our portfolio.

Transportation

Instrument trolleys have been designed not only to ease the transportation of materials, instruments and equipment to the CSSD and after sterilization to hospital departments, but also to facilitate the use of sterilized objects (e.g. during operations or procedures).

Closed trolleys allows sterile or contaminated materials to be transported in a way that isolates them from the environment. If an even greater barrier is needed, we recommend trolleys that have doors with gaskets.

We also offer special trolleys for transporting sterilization baskets, paper sheets, as well as containers and baskets that comply with ISO dimension standards.



Scrub sinks

Patient and staff safety is our priority, which is why our offer includes **scrub sinks**. Regardless of whether it is a treatment room, CSSD or manufacturing plant, everywhere high sanitary requirements must be met and thorough hand washing is a must, our scrub sinks are perfect choice. If an even higher level of hygiene is required, scrub sinks models with non-contact faucets are available.



Storage

The **modular furniture system** includes base cabinets, countertops, tall and hanging cabinets which allows you to pick a set that is ideally suited to your needs. Regardless of whether it is an operating theater, treatment room, CSSD room, laboratory or pharmacy, our employees will help you choose furniture sets that will increase efficiency, comfort and ease of work.

In addition, we offer hook racks for STU size containers, stainless steel storage pallets and storage racks with solid or perforated shelves.

Additional equipment

The **pass-through cabinet** allows the transfer of contaminated materials, instruments and equipment between two rooms, preventing cross contamination and restricting personnel movement between these rooms.

In the list of additional equipment we also have plaster bandage soaking stations, benches for changing and storing footwear, step stools as well as waste bag carts.

Standards and directives

Our products meet all applicable standards and directives and not less than below

Europe

EN 285:2015

Sterilization – Steam sterilizers – Large sterilizers

EN ISO 17665-1:2006

EN ISO 15883-1:2009 + A1:2014

EN ISO 15883-2:2009

EN ISO 14971:2019

Directives

93/42/EEC Directive
Medical Device

2014/68/EU Directive
Pressure Equipment

Pressure vessels and steam generator construction

WUDT/UC/2003

Pressure devices

Quality System Compliance

EN ISO 9001:2015

Quality Management Systems

EN ISO 13485:2016-04

Quality Management System – Medical Devices

Safety and EMC Standards

EN 61010-1:2010 + A1:2019

EN 61010-2-040:2015

EN 61326-1:2013

Quality management systems



for medical devices

SMS sp. z o.o.

8 Adamowicza Street
05-530 Góra Kalwaria, Poland
tel.: +48 22 843 27 61
e-mail: market@sms.com.pl

www.sms.com.pl